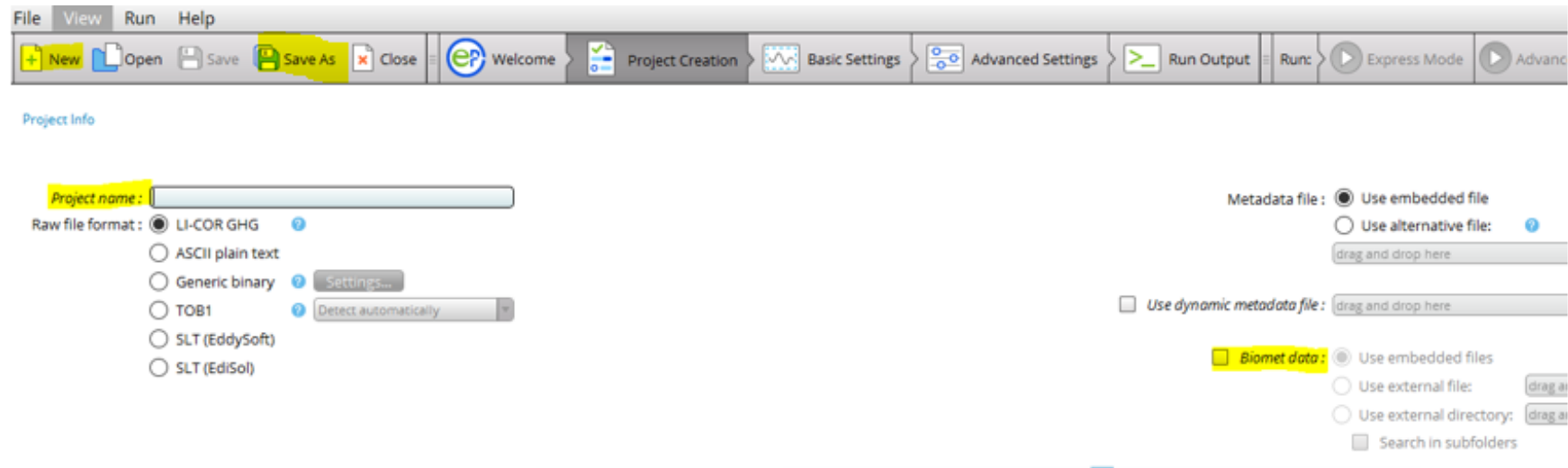


How to Run EddyPro

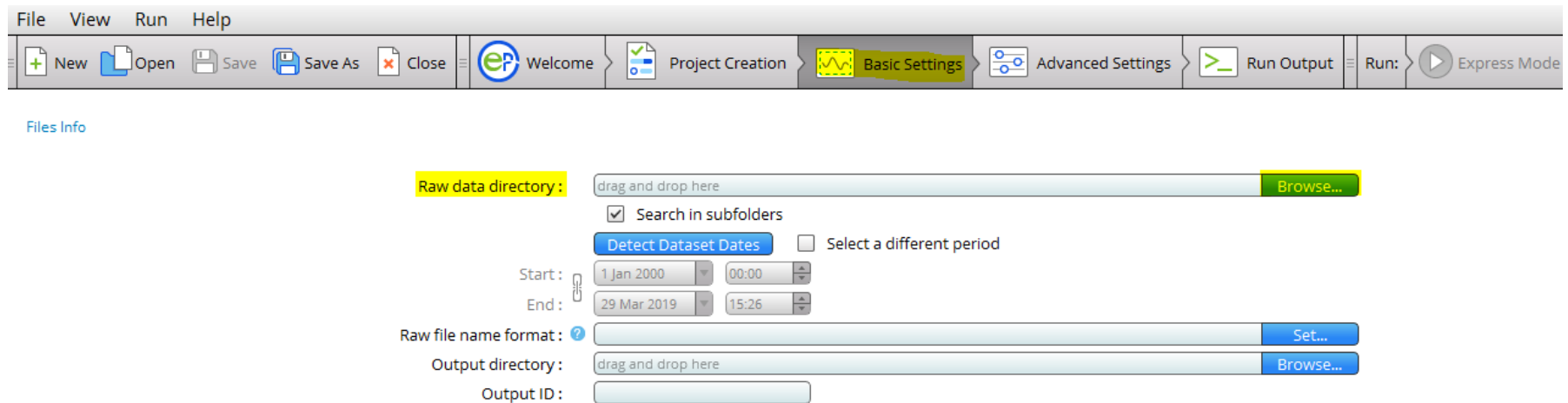
➤ Step 1: Creating a project

- Click “New”
- Type in a “Project name”
- Check “Biomet data” box if Biomet data are available
- Click “Save As” to save the project



How to Run EddyPro

- Step 2: Selecting your raw data
 - Click “Basic Settings”
 - Click “Browse” to select the folder of your raw data



How to Run EddyPro

- Step 3: Setting up an output directory and then starting to run
 - Click “Browse” to set up a directory for out[puts]
 - Type in a label for “Output ID”
 - Click “Express Mode” to run in express mode or “Advanced Mode” to run in advanced mode



Files Info

Raw data directory: C:\Eddypro Testing\EP7 testing\2nd spectral analysis\GHG Browse...

Search in subfolders 48 files found

Detect Dataset Dates Select a different period

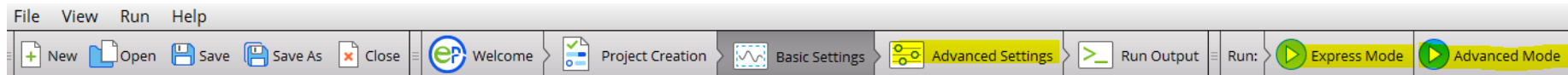
Start: 1 Jan 2000 00:00

End: 29 Mar 2019 15:26

Raw file name format: yyyy-mm-ddTHMM??_LERS-75H-2035.ghg Set...

Output directory: drag and drop here Browse...

Output ID:



Files Info